

BASS

Sunday Driver - All State Vocal Jazz Audition 2016

Peter Eldridge arr. Sam Alhadid

Swing $\text{♩} = 140$
mf *gradual cresc.*

Voice

1 What Ev - er ___ Hap - pened to the Sun - day

4 Dri - ver? Con - si - der the Con - cept in your mind

7 ___ if you will. ___ *mp* No - thing

10 Pres - sing ___ no ___ place, to ___ Go ___ And

13 Hap - py ne ver go ing Fast - er than slow.

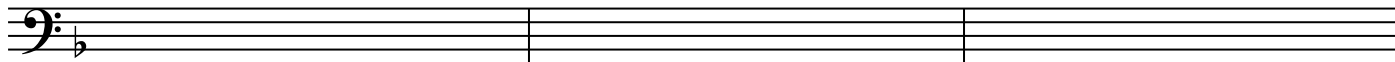
16 *f* What - ev - er hap - pened to the Sun - day ___ Dri - ver?

19 Buh Beh Ba Doo Ba Det n Day Ba Doot N Doot Ba Day Ba Doo Ba Day Ba Day Ba

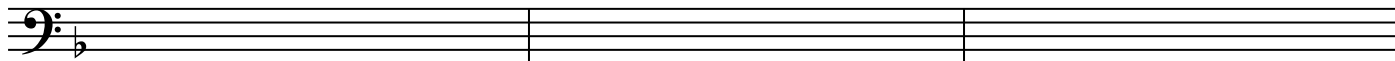
22 Doo Way.

The image shows a musical score for the bass part of the song 'Sunday Driver'. It is written in bass clef with a key signature of one flat (B-flat) and a 4/4 time signature. The tempo is marked 'Swing' with a quarter note equal to 140 beats per minute. The score is divided into measures, with measure numbers 1, 4, 7, 10, 13, 16, 19, and 22 indicated. Dynamics include *mf* (mezzo-forte), *mp* (mezzo-piano), and *f* (forte). There are also markings for 'gradual cresc.' and triplets. The lyrics are written below the notes, with some words connected by hyphens and some words on separate lines. The score ends with a double bar line at measure 22.

25



28



31

