

ALTO

# Sunday Driver - All State Vocal Jazz Audition 2016

Peter Eldridge arr. Sam Alhadid

Swing ♩ = 140  
*mf* *gradual cresc.*

Voice

1 What Ev - er \_\_\_\_ Hap - pened to the Sun - day

4 Dri - ver? Con - si - der the Con - cept in your mind

7 \_\_\_\_\_ if you will. \_\_\_\_\_ *mp* No - thing

10 Pres - sing \_\_\_\_\_ no \_\_\_\_\_ place, to \_\_\_\_\_ Go \_\_\_\_\_ And

13 Hap - py ne ver go ing Fast - er than slow.

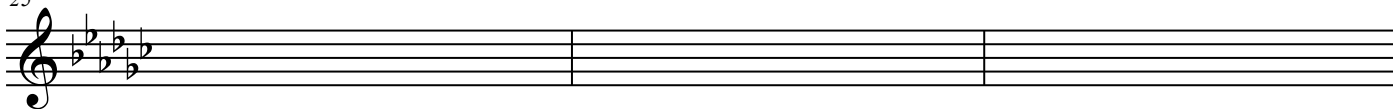
16 *f* 3 3 3  
What - ev - er hap - pened to the Sun - day \_\_\_\_\_ Dri - ver?

19 Buh Beh Ba Doo Ba Det n Day Ba Doot N Doot Ba Day Ba Doo Ba Day Ba Day Ba

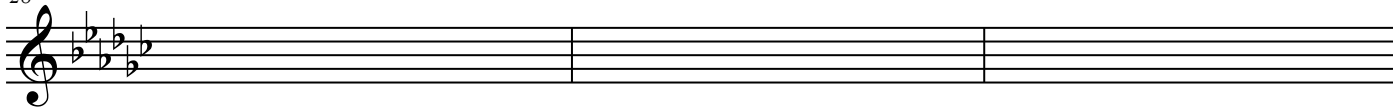
22 Doo Way.

The image shows a musical score for an Alto voice part. It consists of ten staves of music in 4/4 time, with a tempo of 140 beats per minute. The key signature has three flats (B-flat, E-flat, A-flat). The score includes lyrics and dynamic markings such as *mf*, *gradual cresc.*, and *mp*. There are also triplet markings over measures 16-18. The lyrics are: "What Ev - er \_\_\_\_ Hap - pened to the Sun - day Dri - ver? Con - si - der the Con - cept in your mind \_\_\_\_\_ if you will. \_\_\_\_\_ No - thing Pres - sing \_\_\_\_\_ no \_\_\_\_\_ place, to \_\_\_\_\_ Go \_\_\_\_\_ And Hap - py ne ver go ing Fast - er than slow. What - ev - er hap - pened to the Sun - day \_\_\_\_\_ Dri - ver? Buh Beh Ba Doo Ba Det n Day Ba Doot N Doot Ba Day Ba Doo Ba Day Ba Day Ba Doo Way."

25



28



31

